

LEGEND

LIMITS OF COUNTY RIGHT-OF-WAY

LIMITS OF REVOCABLE LICENSE AREA

DATE	REVISIONS DESCRIPTION

PUBLIC WORKS DEPARTMENT  
TRAFFIC ENGINEERING DIVISION  
2300 WEST COMMERCIAL BLVD  
FORT LAUDERDALE, FL 33309

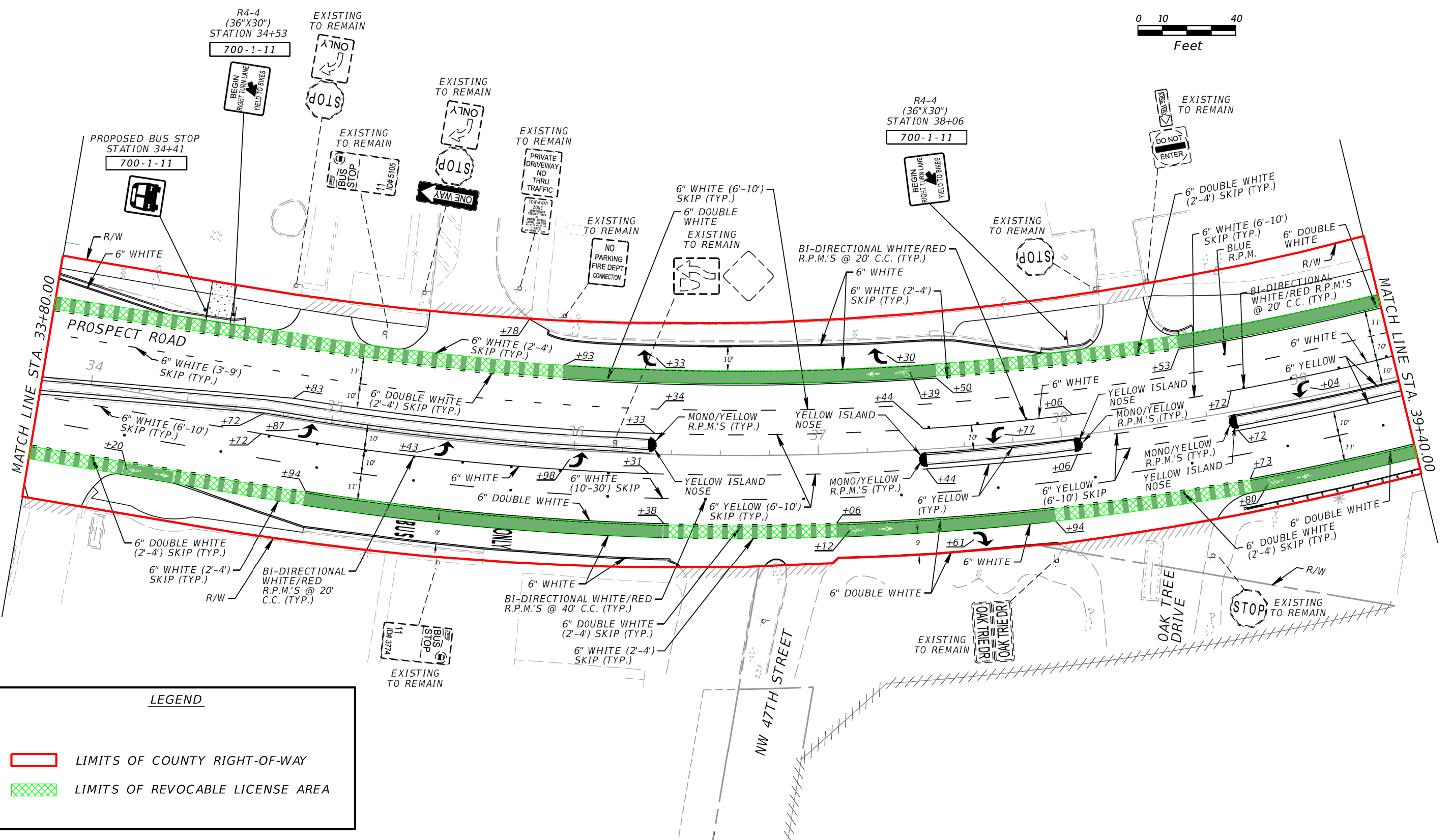
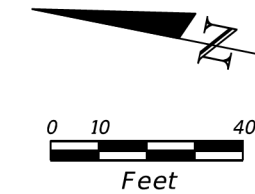


PUBLIC WORKS DEPARTMENT  
TRAFFIC ENGINEERING DIVISION

COUNTY PROJECT NO.

**SIGNING AND PAVEMENT  
MARKING PLAN**

SHEET NO.  
**S-1**



REVISIONS	
DATE	DESCRIPTION

PUBLIC WORKS DEPARTMENT  
 TRAFFIC ENGINEERING DIVISION  
 2300 WEST COMMERCIAL BLVD  
 FORT LAUDERDALE, FL 33309

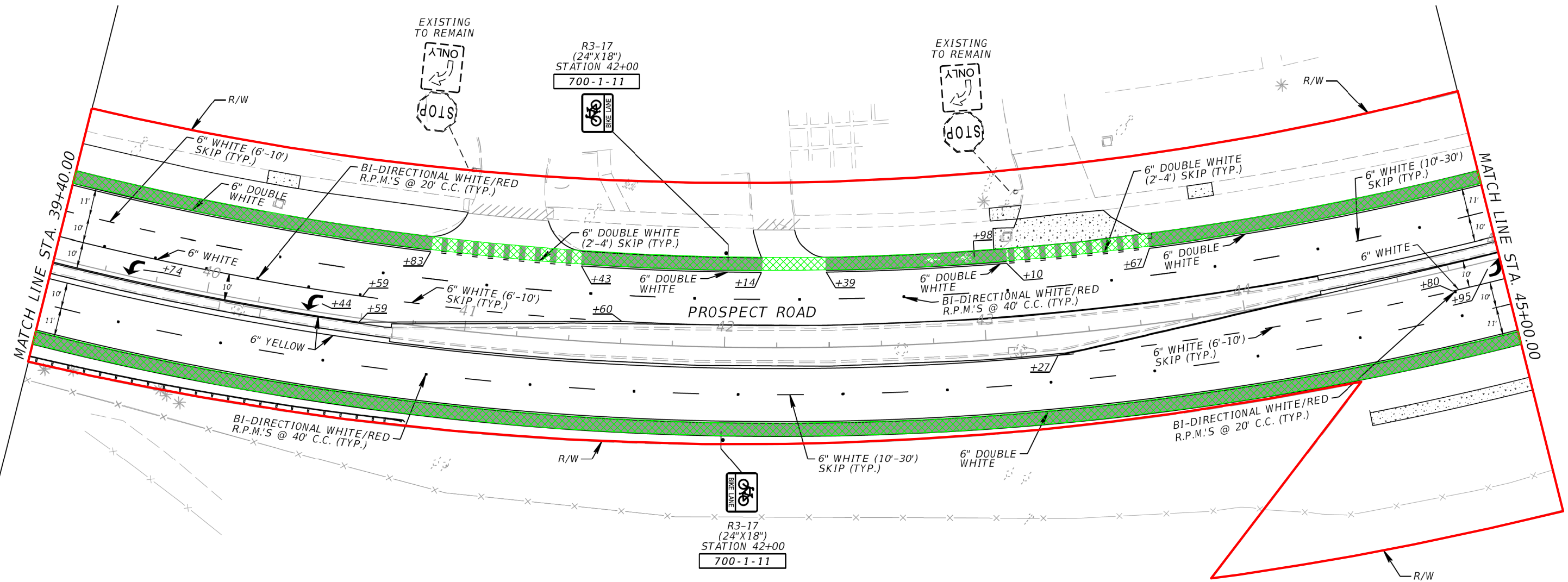
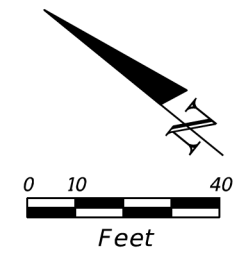




PUBLIC WORKS DEPARTMENT  
 TRAFFIC ENGINEERING DIVISION  
 COUNTY PROJECT NO.

**SIGNING AND PAVEMENT  
 MARKING PLAN**

SHEET NO.  
 S-2

SUSERS SDATES STIMES SFILES



LEGEND	
	LIMITS OF COUNTY RIGHT-OF-WAY
	LIMITS OF REVOCABLE LICENSE AREA

REVISIONS	
DATE	DESCRIPTION

PUBLIC WORKS DEPARTMENT  
 TRAFFIC ENGINEERING DIVISION  
 2300 WEST COMMERCIAL BLVD  
 FORT LAUDERDALE, FL 33309

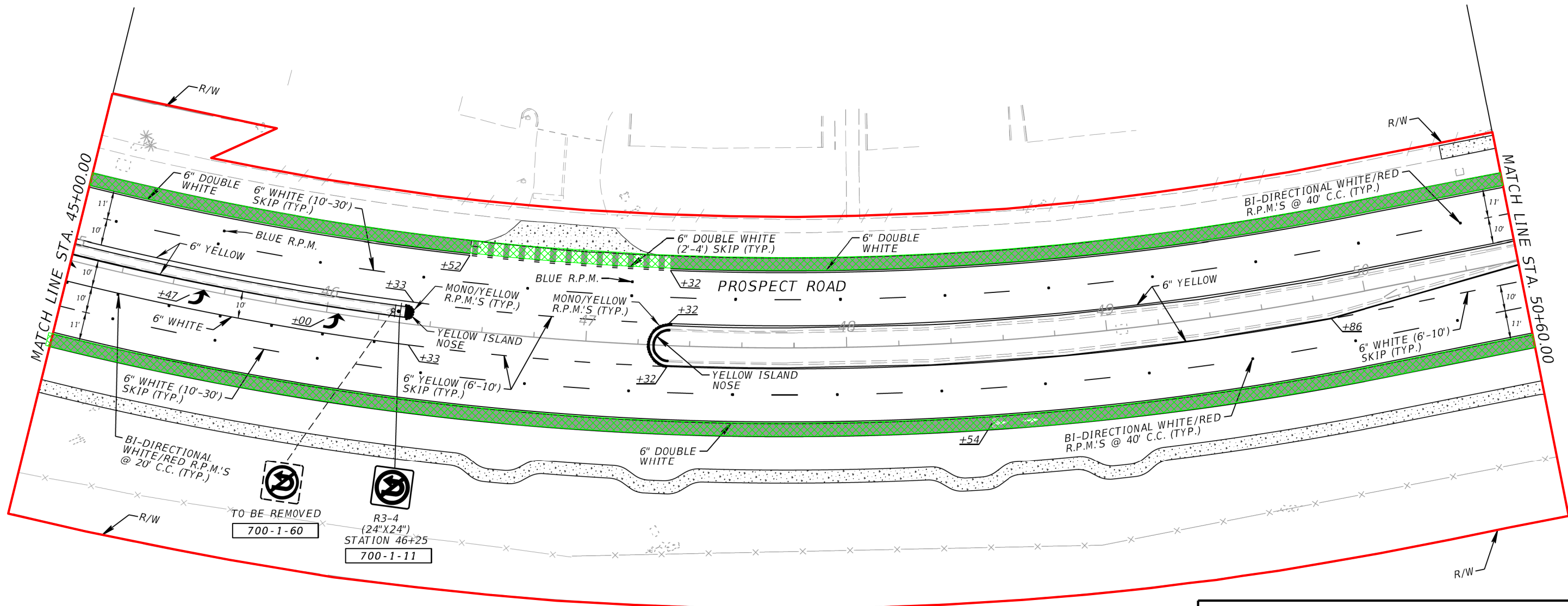
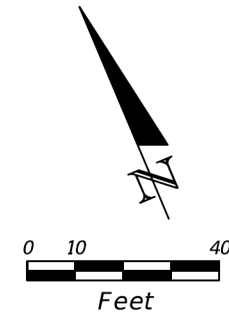


PUBLIC WORKS DEPARTMENT  
 TRAFFIC ENGINEERING DIVISION

COUNTY PROJECT NO.

**SIGNING AND PAVEMENT  
 MARKING PLAN**

SHEET NO.  
 S-3



**LEGEND**

LIMITS OF COUNTY RIGHT-OF-WAY

LIMITS OF REVOCABLE LICENSE AREA

DATE	REVISIONS DESCRIPTION

PUBLIC WORKS DEPARTMENT  
TRAFFIC ENGINEERING DIVISION  
2300 WEST COMMERCIAL BLVD  
FORT LAUDERDALE, FL 33309

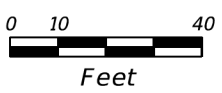
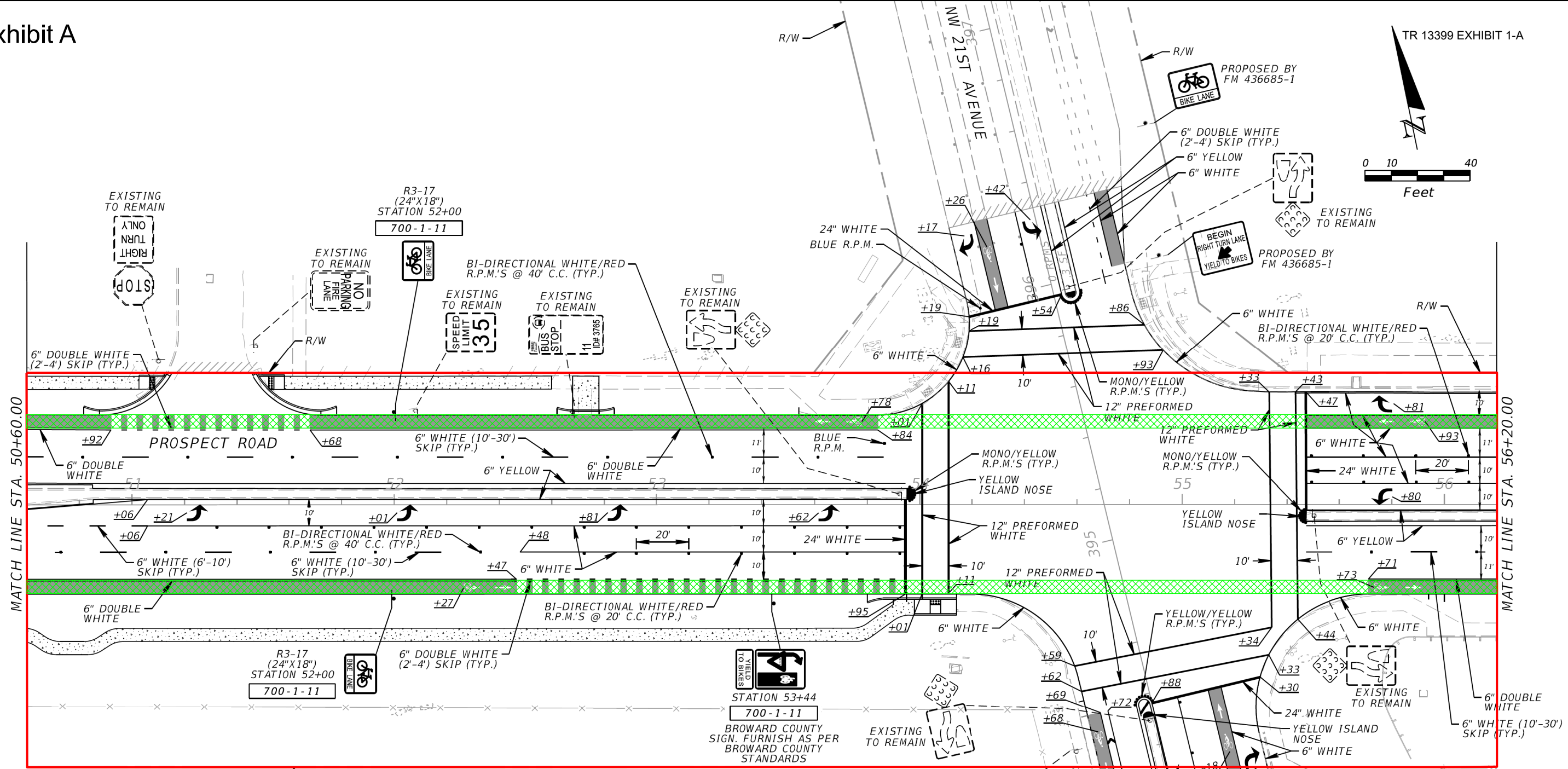


PUBLIC WORKS DEPARTMENT  
TRAFFIC ENGINEERING DIVISION

COUNTY PROJECT NO.

**SIGNING AND PAVEMENT  
MARKING PLAN**

SHEET NO.  
S-4



**LEGEND**

- LIMITS OF COUNTY RIGHT-OF-WAY
- LIMITS OF REVOCABLE LICENSE AREA

NOTE:  
PAVEMENT MARKINGS SHOWN ON THE NORTH AND SOUTH LEGS OF NW 21ST STREET ARE NOT INCLUDED IN THIS DESIGN. REFER TO PROPOSED PROJECT FM 436685-1.

REVISIONS	
DATE	DESCRIPTION

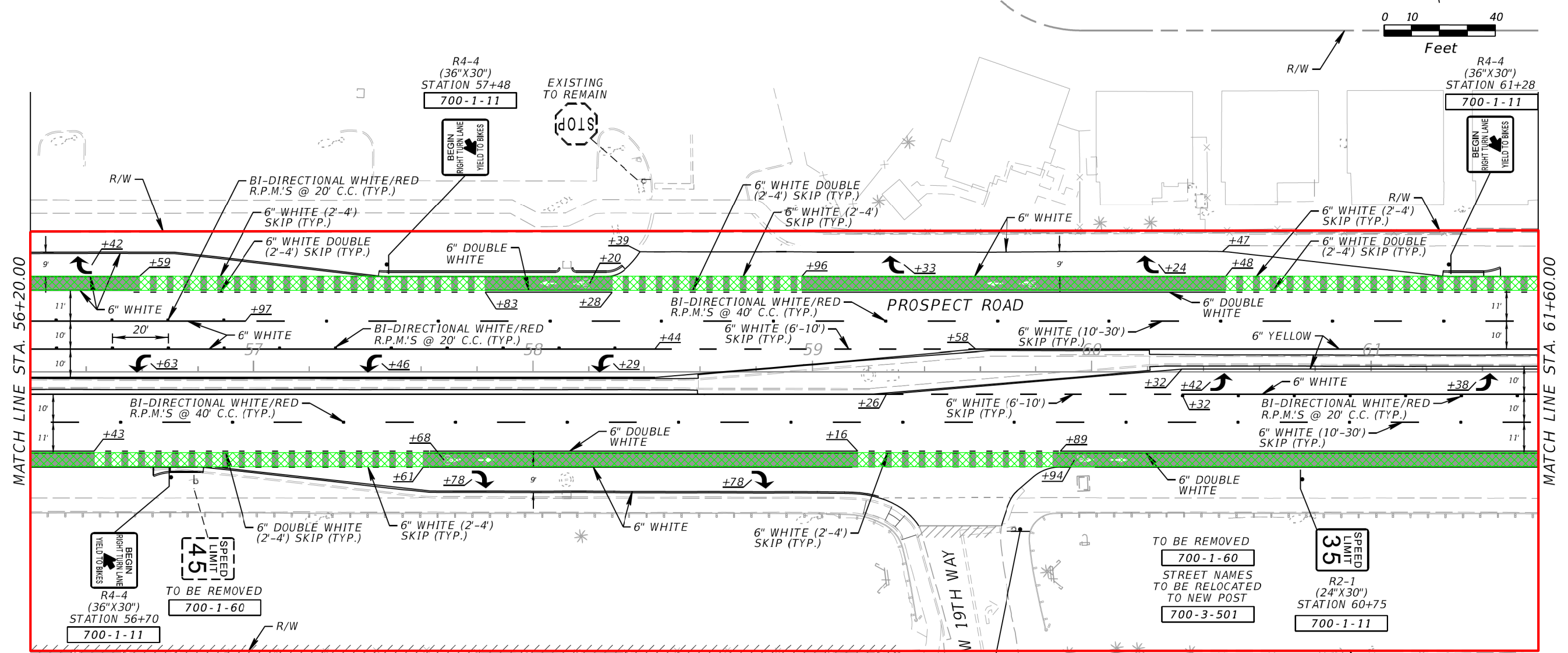
PUBLIC WORKS DEPARTMENT  
TRAFFIC ENGINEERING DIVISION  
2300 WEST COMMERCIAL BLVD  
FORT LAUDERDALE, FL 33309



PUBLIC WORKS DEPARTMENT  
TRAFFIC ENGINEERING DIVISION  
COUNTY PROJECT NO.

**SIGNING AND PAVEMENT MARKING PLAN**

SHEET NO.  
S-5



**LEGEND**

- LIMITS OF COUNTY RIGHT-OF-WAY
- LIMITS OF REVOCABLE LICENSE AREA

REVISIONS	
DATE	DESCRIPTION

PUBLIC WORKS DEPARTMENT  
 TRAFFIC ENGINEERING DIVISION  
 2300 WEST COMMERCIAL BLVD  
 FORT LAUDERDALE, FL 33309

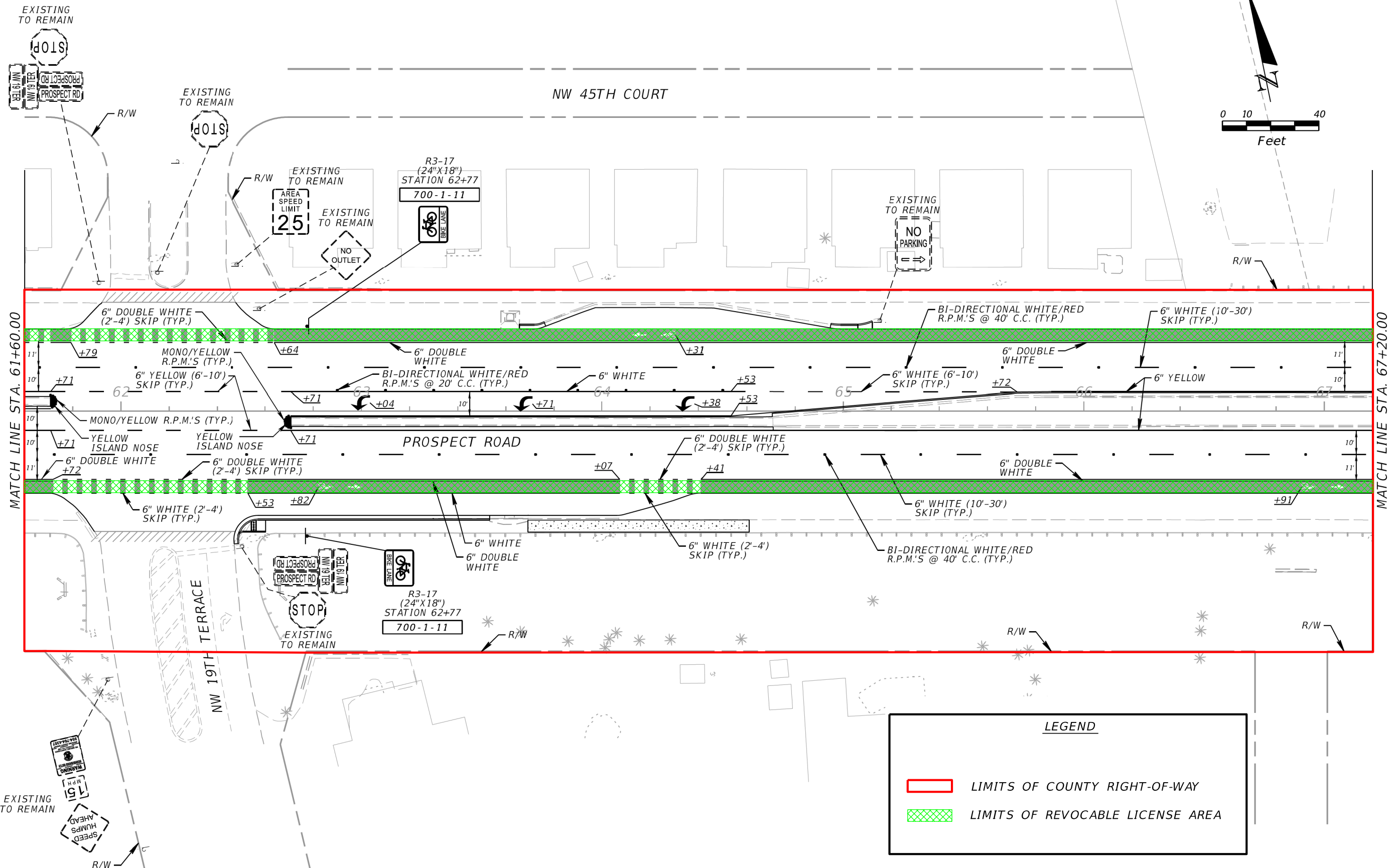


PUBLIC WORKS DEPARTMENT  
 TRAFFIC ENGINEERING DIVISION

COUNTY PROJECT NO.

**SIGNING AND PAVEMENT MARKING PLAN**

SHEET NO.  
 S-6



REVISIONS	
DATE	DESCRIPTION

PUBLIC WORKS DEPARTMENT  
 TRAFFIC ENGINEERING DIVISION  
 2300 WEST COMMERCIAL BLVD  
 FORT LAUDERDALE, FL 33309



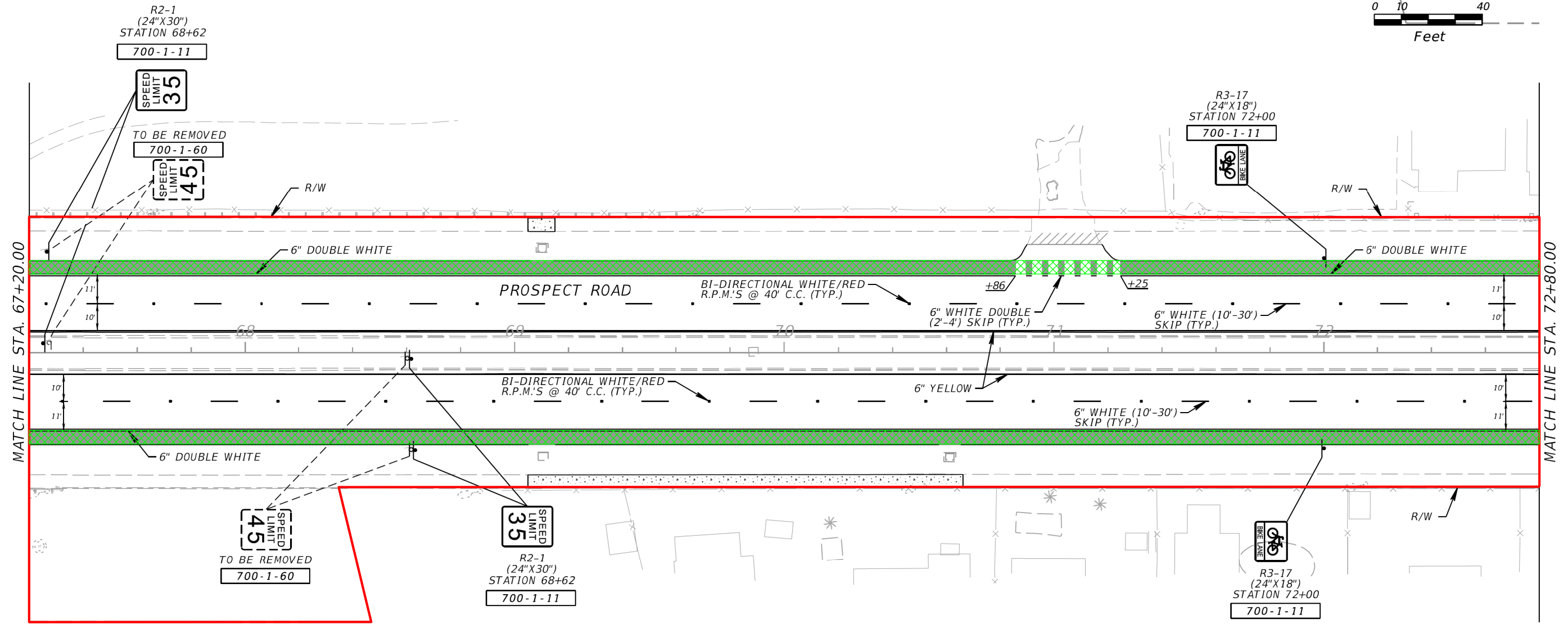
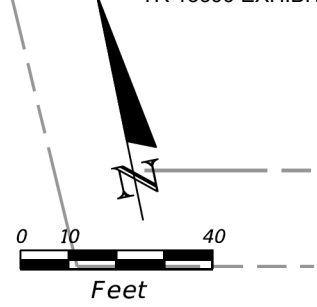
PUBLIC WORKS DEPARTMENT  
 TRAFFIC ENGINEERING DIVISION

COUNTY PROJECT NO.

**SIGNING AND PAVEMENT  
 MARKING PLAN**

SHEET NO.

S-7



**LEGEND**

- LIMITS OF COUNTY RIGHT-OF-WAY
- LIMITS OF REVOCABLE LICENSE AREA

REVISIONS	
DATE	DESCRIPTION

PUBLIC WORKS DEPARTMENT  
 TRAFFIC ENGINEERING DIVISION  
 2300 WEST COMMERCIAL BLVD  
 FORT LAUDERDALE, FL 33309

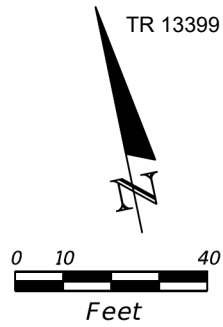
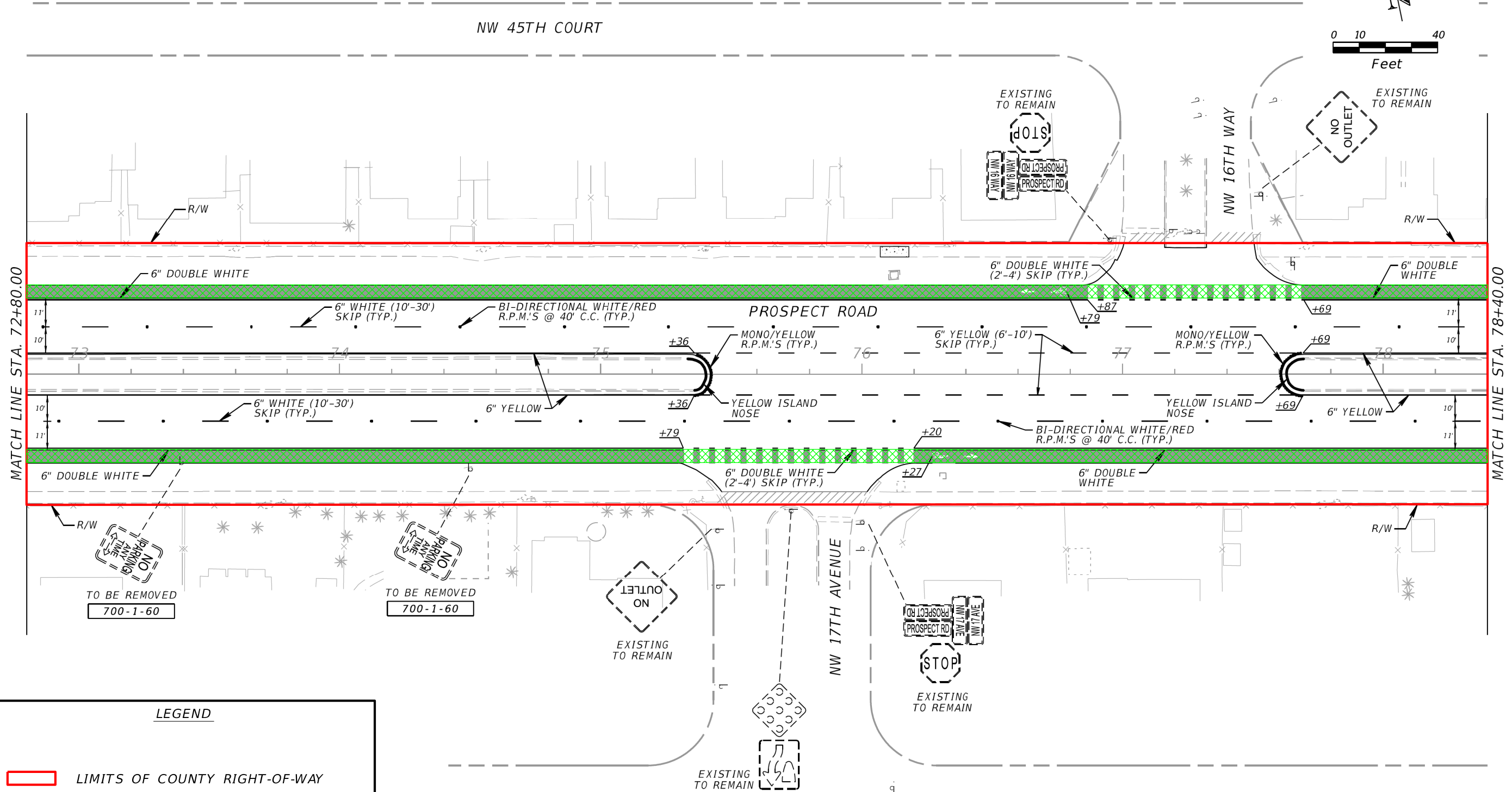


PUBLIC WORKS DEPARTMENT  
 TRAFFIC ENGINEERING DIVISION

COUNTY PROJECT NO.

**SIGNING AND PAVEMENT  
 MARKING PLAN**

SHEET NO.  
 S-8



**LEGEND**

LIMITS OF COUNTY RIGHT-OF-WAY

LIMITS OF REVOCABLE LICENSE AREA

DATE	REVISIONS DESCRIPTION

PUBLIC WORKS DEPARTMENT  
TRAFFIC ENGINEERING DIVISION  
2300 WEST COMMERCIAL BLVD  
FORT LAUDERDALE, FL 33309

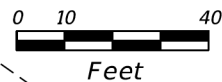
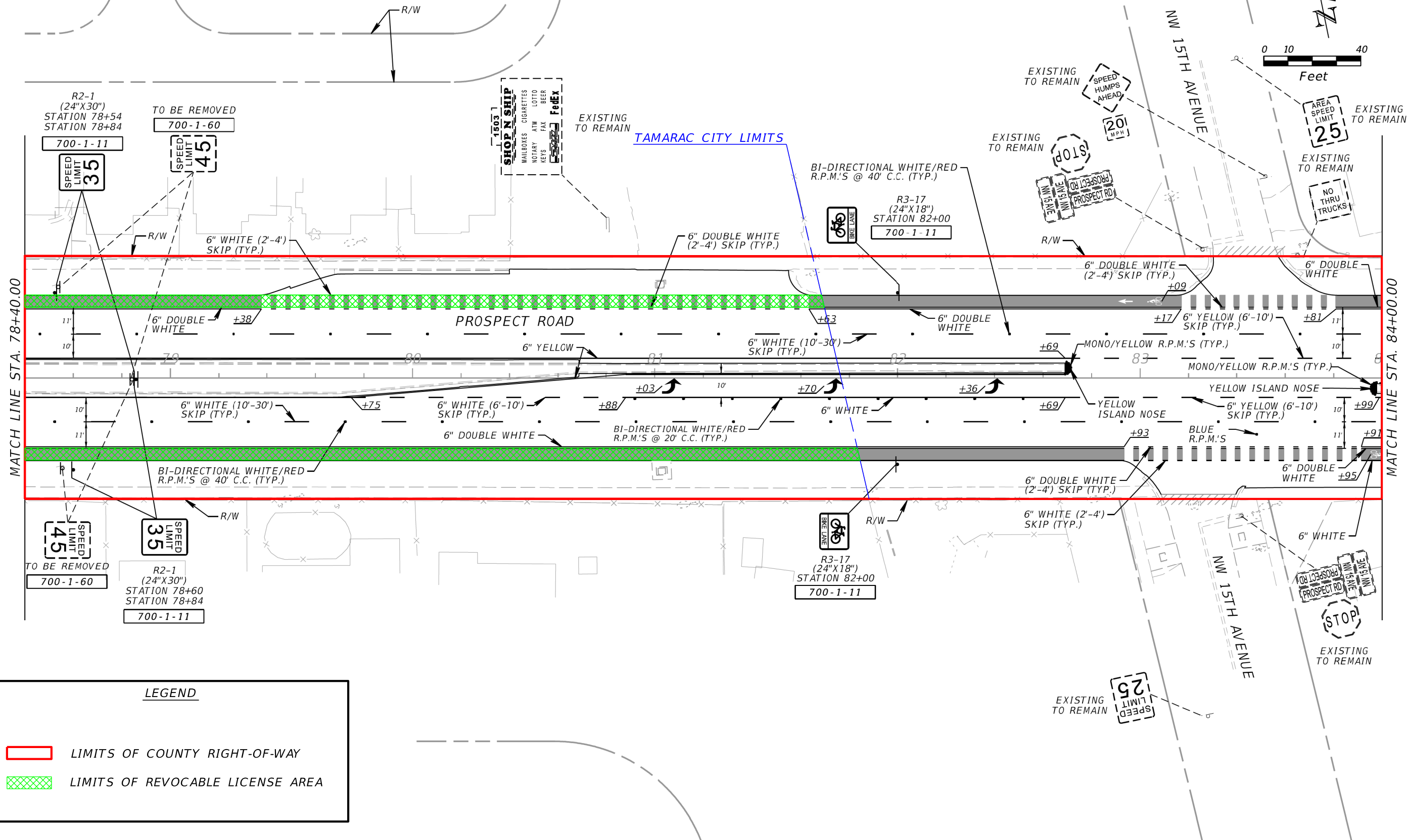




PUBLIC WORKS DEPARTMENT  
TRAFFIC ENGINEERING DIVISION

COUNTY PROJECT NO.

**SIGNING AND PAVEMENT  
MARKING PLAN**

SHEET  
NO.  
**S-9**



LEGEND	
	LIMITS OF COUNTY RIGHT-OF-WAY
	LIMITS OF REVOCABLE LICENSE AREA

REVISIONS	
DATE	DESCRIPTION

PUBLIC WORKS DEPARTMENT  
 TRAFFIC ENGINEERING DIVISION  
 2300 WEST COMMERCIAL BLVD  
 FORT LAUDERDALE, FL 33309



PUBLIC WORKS DEPARTMENT  
 TRAFFIC ENGINEERING DIVISION

COUNTY PROJECT NO.

**SIGNING AND PAVEMENT MARKING PLAN**

SHEET NO.  
 S-10